

# SUBWAY 2.0

- Ⓛ **Montageanleitung**
- ⒼⒷ **Installation instructions**
- ⒻⓇ **Instructions de montage**
- ⒸⓃ **安装说明书**
- ⒺⓈ **Instrucciones de instalación**



**Villeroy & Boch**

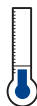
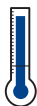
1748



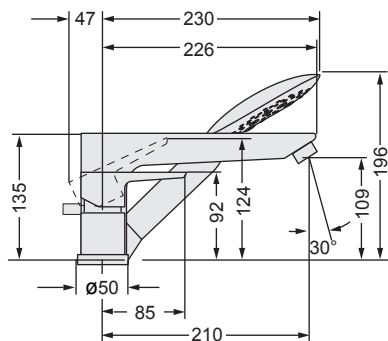
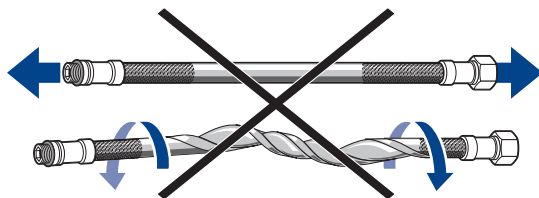
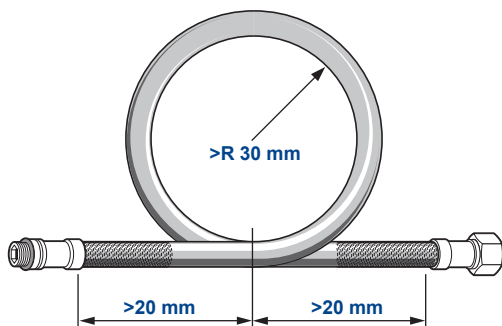
< 1000 kPa (10 bar)



< 80°C  
< 176°F

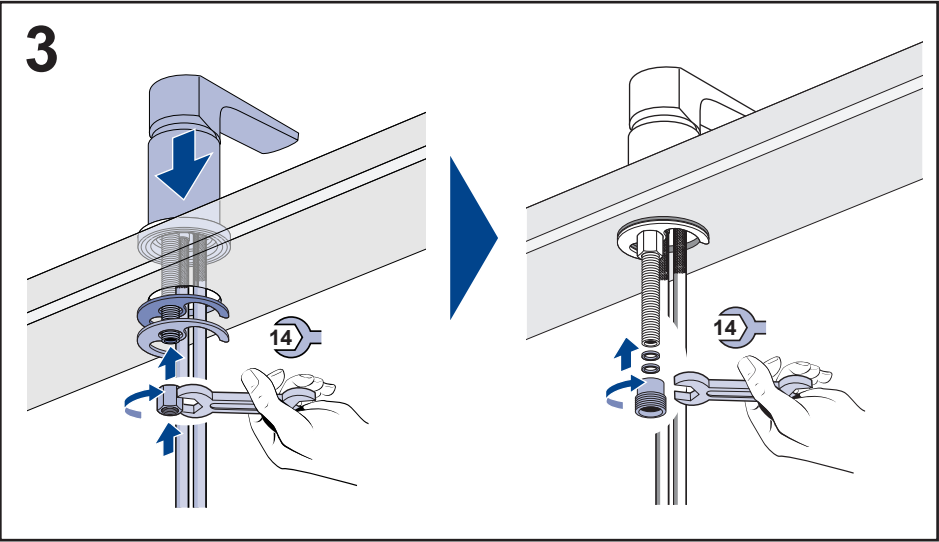
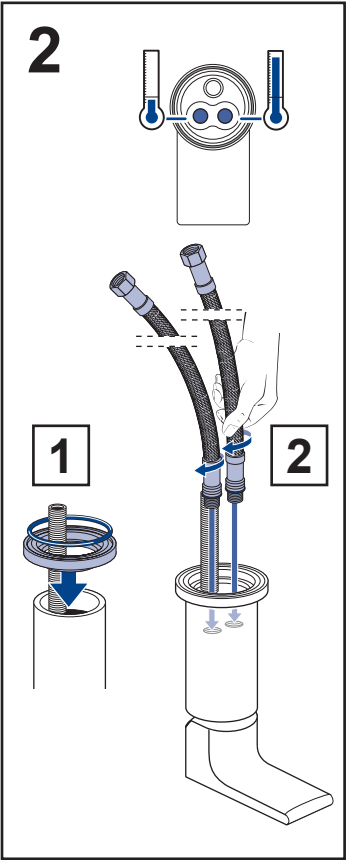
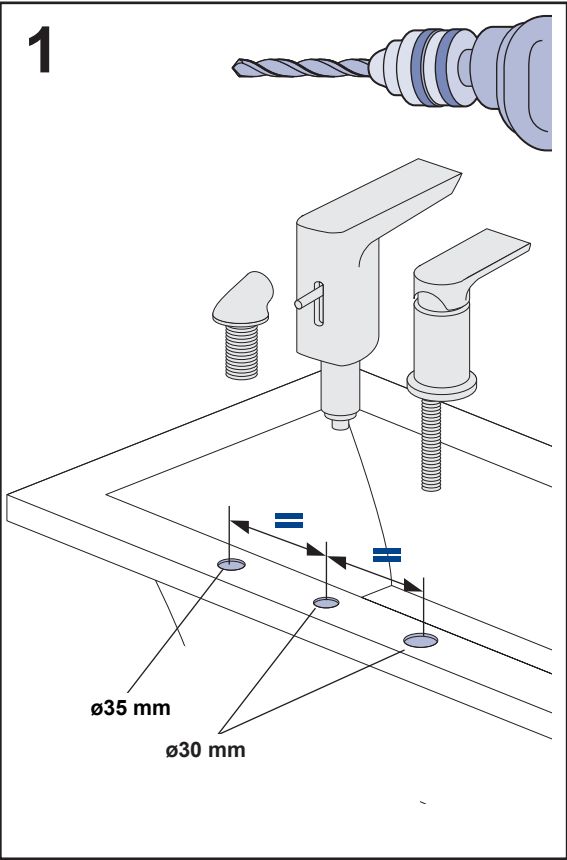


~10°C  
~50°F



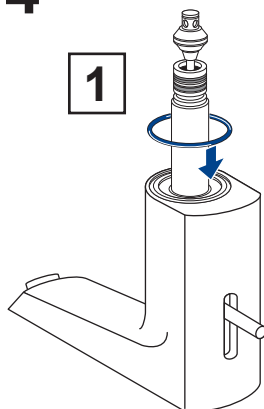
TVT10250400061

[mm]

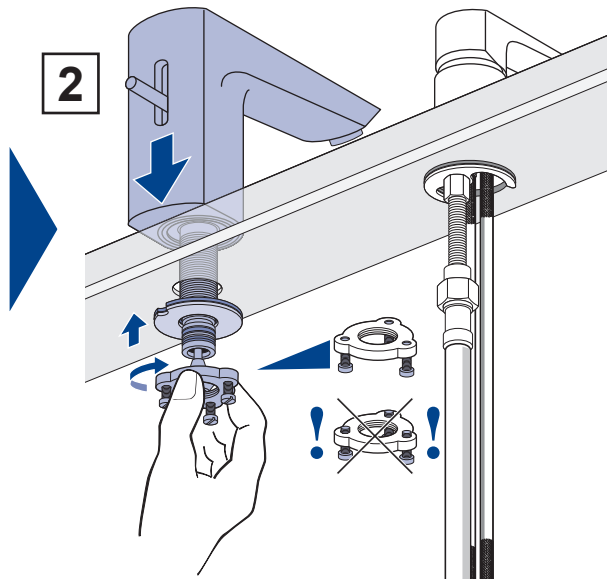


4

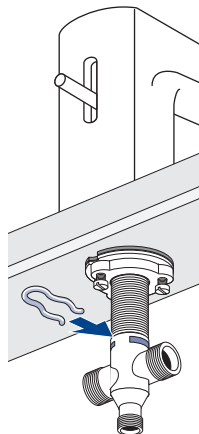
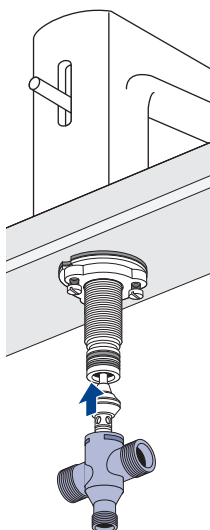
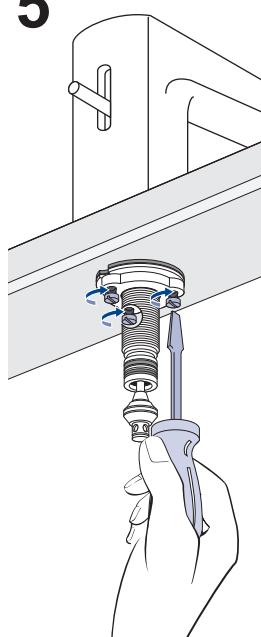
1

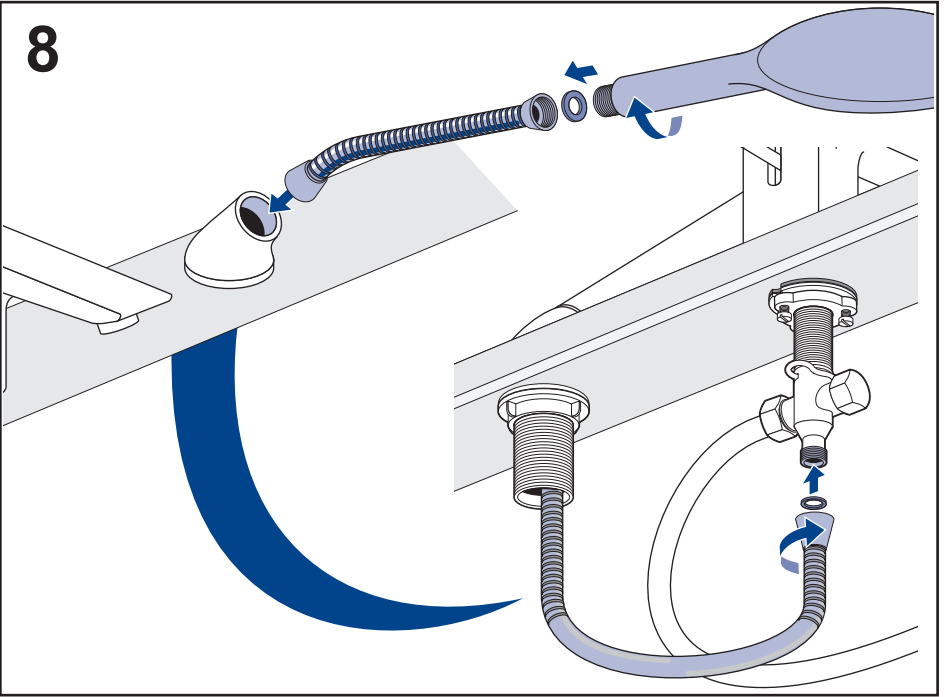
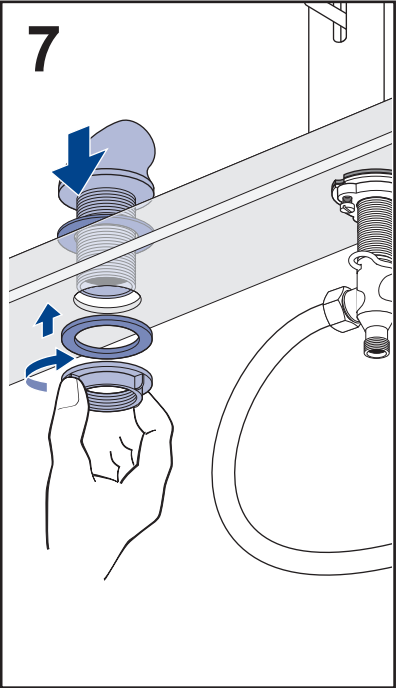
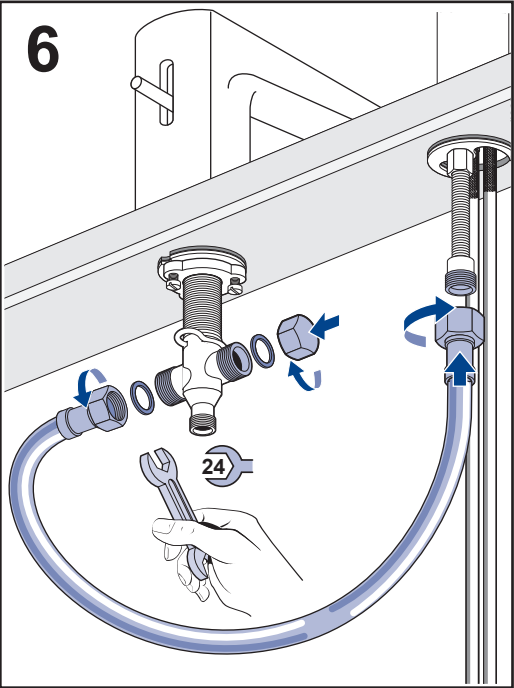


2

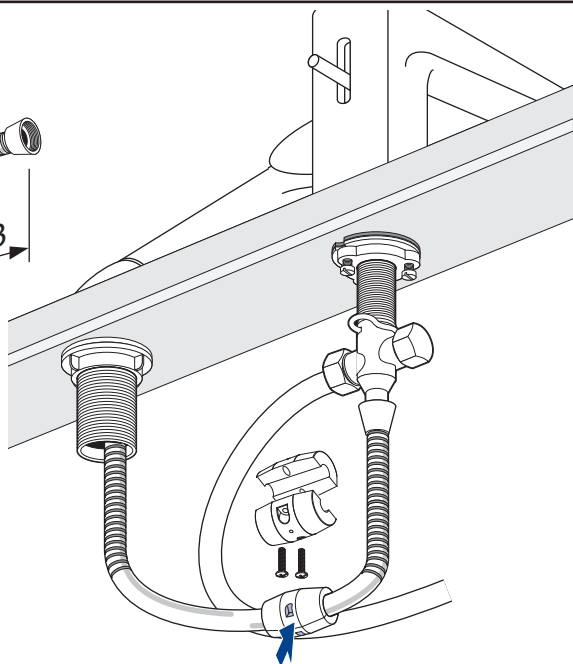
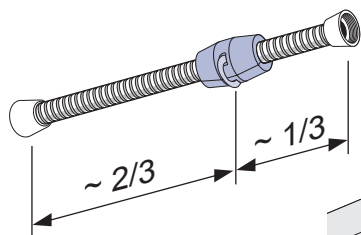


5

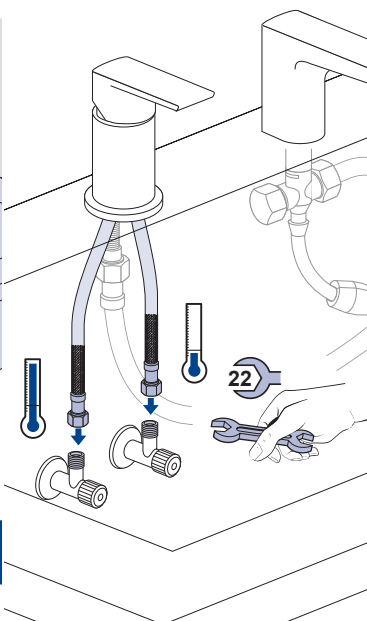
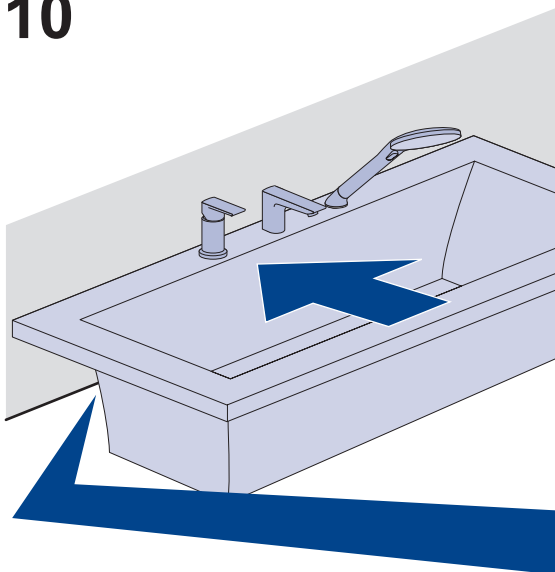


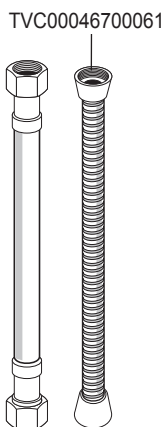
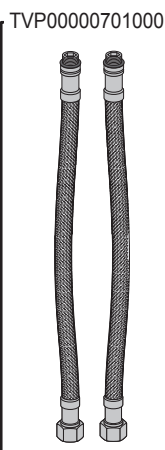
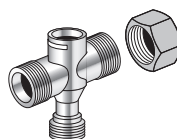
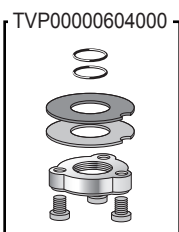
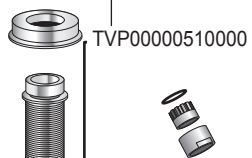
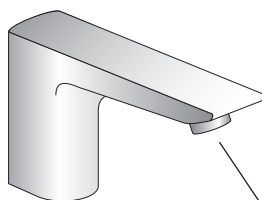
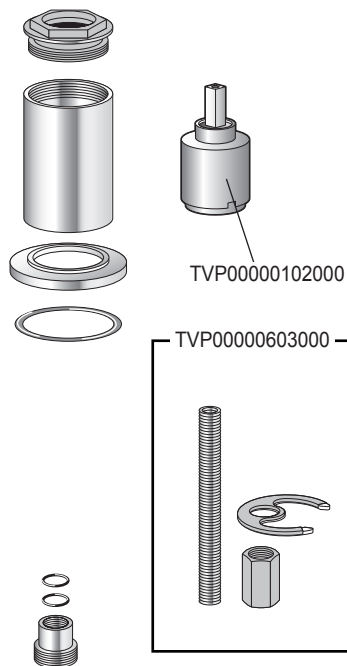
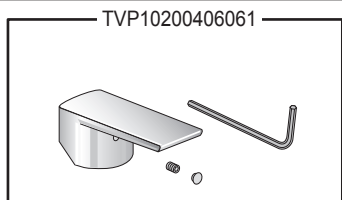


9

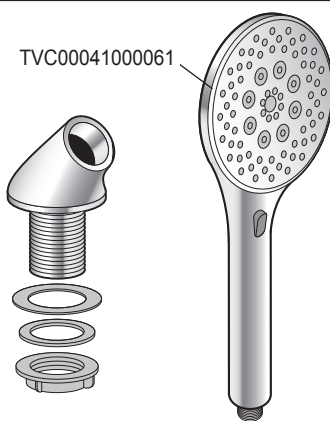
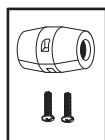


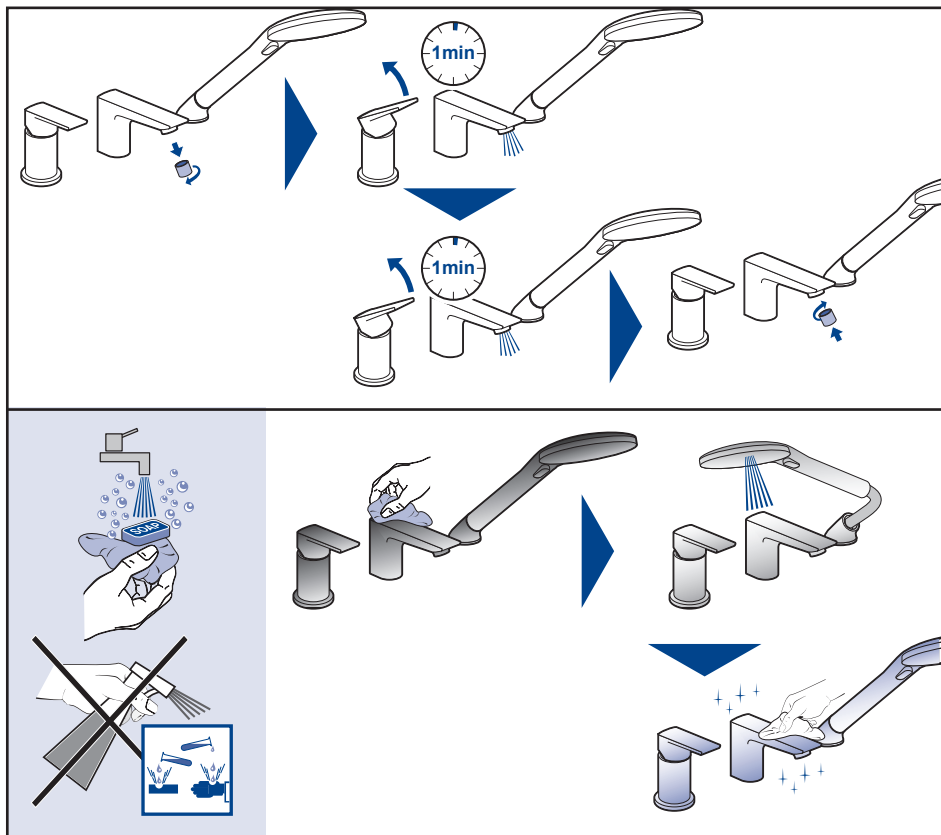
10





TVC00041000061





Änderungen vorbehalten

We reserve the right to make alterations

Sous réserve de modifications

我们保留作出改变的权利

Nos reservamos el derecho de hacer cambios o modificaciones

Controlled



Villeroy & Boch  
1748

Villeroy & Boch AG  
Postfach 12 30 - 66689 Mettlach  
Germany

Tel: +49 (0) 6864 816000  
Fax: +49 (0) 6864 815687  
[www.villeroy-boch.com](http://www.villeroy-boch.com)

Villeroy & Boch Service centre  
Tel: 400-820-1748

TVM10200201000-V21-2015